

HMLP Public Power Scavenger Hunt Photo Checklist

Take pictures of at least ten (10) items on this list and upload using HMLP's online submission form at www.hmlp.com/scavengerhunt by 11:59 PM on October 31st. One submission per household. Photos must be taken in Hingham and original to the person(s) submitting them. Always practice safety first and pay attention to where you are. Good luck!

Cross off the circles as you go to keep track of which items you've found!

**Power
Lines**

**ENERGY
STAR
Label**

**Public EV
Charging
Station**

**Plug-in
Electric
Vehicle**

**Electric
Meter**

**Power
Strip**

**Transformer
on a Pole**

**Solar
Panels**

**LED
Street
Light**

**HMLP
Payment
Box**

**Electrify
Hingham
webpage**

**HMLP
Logo**

We encourage you to share your photos online or post about the event!
Tag us on social media and use the hashtag #HMLPScavengerHunt



@HinghamLight02043



@HinghamLight



@HinghamLight



@HinghamLight

HMLP Public Power Scavenger Hunt

Examples & Tips (1 of 3)

Power Lines

These are the wires on top of utility poles that run alongside many of the streets in Hingham. These wires, also called “distribution lines,” deliver electricity to homes and businesses. You are likely to find these in your neighborhood and even on your own street!



ENERGY STAR® Label

This is a national symbol for energy efficiency. Products that earn this label are certified by the Environmental Protection Agency (EPA) to meet efficiency standards and help consumers save energy and money. Look for the label on various electrical items in your home like air conditioners, air source heat pumps, refrigerators, light bulbs, and more. HMLP also offers a rebate for certain ENERGY STAR appliances: www.hmlp.com/appliances



Public EV Charging Station

Electric vehicles (EVs) are commonly charged at home using a standard outlet or a level-2 charging station. There is a public network of charging stations available for EV drivers who need to charge-up while they are out and about. These public charging stations can be found in several parking lots throughout Hingham.



Plug-In Electric Vehicle

A plug-in electric vehicle (EV) is a car that runs on electricity or a hybrid combination of electricity & gas, and it can be charged by plugging it into an electrical outlet. There are over 500 EVs of various models in Hingham, so keep an eye out. Some of your neighbors may even have one! HMLP is hosting an EV Showcase on October 22nd from 11 AM to 2 PM at Station St if you'd like to see an EV up close. There are multiple EV incentives in Hingham and a Drive & Save Wizard to explore available models: www.hinghamdriveselectric.org



HMLP Public Power Scavenger Hunt

Examples & Tips (2 of 3)

Electric Meter

An electric meter measures the amount of electricity that a home or business uses for billing purposes, and is normally found on the outside of a building. Most electric meters automatically send meter readings to the electric utility. Look around the outside of your home and see if you can find the electric meter.



Power Strip

A power strip can be used to safely plug more than one item into a single electrical outlet. Power strips are commonly used for computer equipment or in an entertainment center. Some power strips have controls that can help you save energy and money by reducing the amount of standby power your electronics consume - these are called "advanced" power strips. There are probably several power strips in use around your home!



Transformer on a Pole

These are large metal cans at the top of utility poles usually in groupings of one (single-phase) or three (three-phase) depending on the electricity demand. Transformers help change electricity from a high power level to a lower, safer one for our homes and gadgets. They make sure we get the right kind of electricity we need, like for lights and appliances, and help keep us safe by being high up and not easy to touch.



Solar Panels

These are special devices installed on rooftops, carports, or in open fields to harness the energy from the sun and create electricity. Electricity generated by solar is one type of "renewable energy" and helps reduce Hingham's carbon emissions. Over 100 homes and businesses in Hingham use solar, including HMLP's office building! .

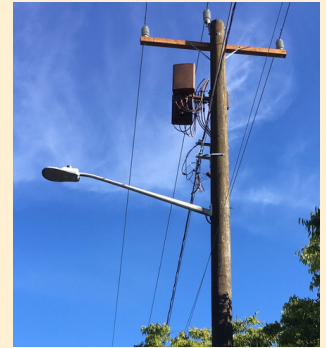


HMLP Public Power Scavenger Hunt

Examples & Tips (3 of 3)

LED Street Light

This is a bright lamp on tall poles along our streets and roads that lights up the night, making it easier to see when it's dark outside. Street lights make it safer for everyone to walk and drive around when it's dark. HMLP uses LED street lights because they are energy-efficient.

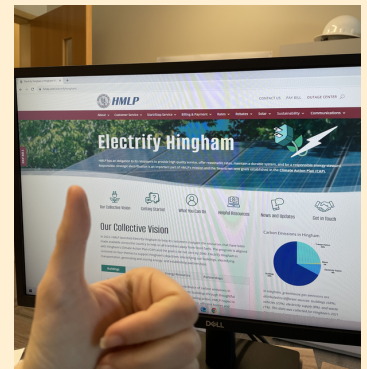


HMLP Payment Box

The HMLP payment box is located at Town Hall and it's a place where people can drop off their electric bill payments. This is a secure box with a slot where you can put your bill payment even when the office is closed. Customers can pay the electric bill before the 15th of the month to receive HMLP's prompt payment discount or skip the box and sign-up for online paperless billing/autopay!

Electrify Hingham Webpage

HMLP launched the Electrify Hingham program in 2022 to help customers access resources to go electric and transition away from fossil fuels. HMLP also offers many rebates to help cover costs. Visit www.hmlp.com and snap a picture once you've located the Electrify Hingham webpage. Take a look through and consider taking a picture of your favorite section!



HMLP Logo

The HMLP Logo is an important symbol to identify your local electric utility. Look for the HMLP logo in front of our building or on our bucket trucks, letters, or our website!